



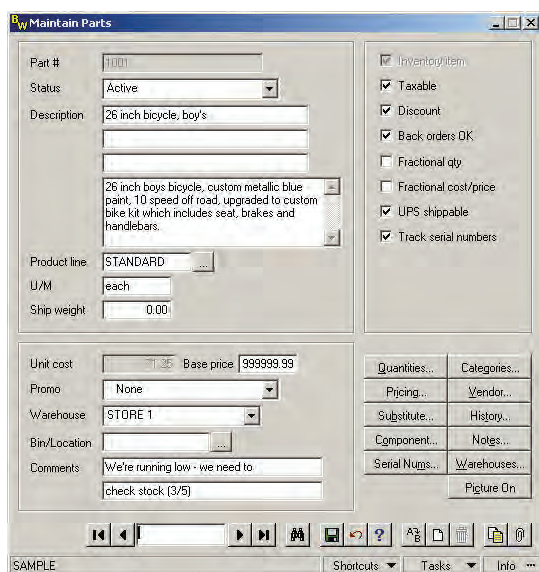
Sage BusinessWorks Accounting

Inventory Control

Successful, well-organized businesses rely heavily on inventory management systems to make certain adequate inventory levels are on hand to satisfy their customer demand. The Inventory Control module for the Sage BusinessWorks Accounting system provides this level of control by offering high-end features normally reserved for large companies, including light manufacturing capabilities, serial number tracking, and multi-warehouse support. Inventory Control even features an image library that allows you to assign a picture to each part.

Improved customer service leads to increased profitability. And, when integrated with the Accounts Receivable and Order Entry modules, Inventory Control can significantly boost your customer service levels while operating as the cornerstone of an effective manufacturing or distribution solution. For more complex project management, Inventory Control can be coupled with the Job Cost module to help track all inventory-related expenses for a project. Inventory tracking is enhanced even more when integrated with the Custom Office module, which creates detailed spreadsheets to provide further analysis of inventory performance.

The Inventory Control system offers comprehensive reporting capabilities to keep you on top of inventory status. It can help you bring about the creation of new or improved purchasing policies, sales policies, pricing methods, and even enhanced customer service. By leveraging Sage BusinessWorks, you have the tools to create an inventory system with the depth to meet your company's needs for years to come.



SPECIFICATIONS (MAXIMUM LIMITS)

Parts	unlimited*
Substitutes per part	5
Costing methods	4
Price levels	25
Customer Specific (Contract) Pricing	5
Quantity price break levels	5
Product categories	5
Quantity per part	9,999,999
Cost per part	\$999,999.99
Price per part	\$9,999,999.99
Decimal places in part quantities	3
Decimal places for costs	4
Decimal places for prices	4
Product lines	Unlimited*
Warehouses	99
Months to keep history	60
Characters in serial number	26
Serial numbers per part	5000
Characters in transaction description	20
Characters in bin location	10
Characters in part ID	20

REPORTS

ABC Analysis	Pick List
Adjustments Transaction Register	Price List
Bin Ticket	Product Line List
Business Graphics	Receipts Transaction Register
Component Use List	Returns Transaction Register
Cost List	Sales Promotions List
Flash	Serialized Inventory
Inventory Low Stock	Stock Status
Inventory Overstock	Subassembly Detail
Inventory Performance	Subassembly List
Issues Transaction	Substitute Parts List
Location List	Transaction Summary
Margin Analysis	Transaction Detail
Master Parts List	Vendor Supply List
On Hand Detail	Warehouse Stock
Physical Inventory	
Variance Report	
Physical Inventory Worksheet	

*Limited only by disk space.



Packaged to provide your business with an abundance of features at an affordable price, Sage BusinessWorks Purchase Order is included with the Inventory Control module at no additional charge. For more information on how Purchase Order can help your business operate more smoothly, please review the Purchase Order specification sheet.

General features

- Tracks backorders and sales promotions when used in conjunction with the Order Entry module.
- Provides complete physical inventory capabilities and makes inventory tracking easy with worksheets and variance reports.
- Provides instant inquiry of part information, including receipts, issues, returns, and adjustments.
- Allows you to post charges to the Job Cost module for more complete tracking of materials used on a project.
- Tracks minimum, maximum, and order point stocking levels by part to help keep stock quantities at optimum levels.

Maintenance

- Tracks quantities and history for up to 99 user-defined warehouses and provides a transfer option that allows parts to be moved among warehouses easily.
- Tracks serial numbers for parts and indicates when parts are received, reserved, or issued.
- Stores and displays images of your parts, allowing you to see a part and verify its description when talking to a vendor or customer.
- Leverages four costing methods: Standard, Average, FIFO, and LIFO.
- Easily copies an existing part to a new part, making the setup of like items faster and easier, with the following fields:
 - Part Description (all lines)
 - Category Information
 - Inventory Item
 - Product Line
 - Sales Promotion (Promo)
 - Taxable
 - Unit of Measure
 - Pricing Method
 - Discount
 - Ship Weight
 - Pricing Matrix
 - Back Orders OK
 - Primary Warehouse
 - Vendors
 - Fractional Quantity
 - Bin Location
 - Components
 - Fractional Cost/Price
 - Comments
 - Warehouses
 - UPS® Shippable
 - Track Serial Numbers
- Maintains complete information for each part, including on-hand, backorder, and on-order quantity, vendor, substitute items, components, and up to 60-month transaction history.
- Provides “model” parts for easy addition of new parts to inventory.
- Supports fractional costs, prices, and quantities for stock and nonstock items.
- Provides four pricing methods (absolute, margin, markup, and base) for each part and allows price differences by customer type as well as quantity price breaks.

- Supports up to 25 price levels (which can be activated on a part-by-part basis) and five quantity breaks to facilitate flexible pricing schemes.
- Supports Customer Specific or Contract Pricing for Inventory parts in the Accounts Receivable module.
- Quickly locates parts, product lines, purchase orders, accounts payable vendors, and general ledger accounts with a search feature.
- Customize part lookups to include only in-stock active items.
- Allows classification of parts on inventory reports, as well as the general ledger posting.
- Allows five user-defined descriptive product categories (like size, style, and color) to be assigned to parts.
- Lets you assign up to five substitute parts for each inventory part, so customers won't have to wait when one is unavailable.
- Enables global changes to multiple part records simultaneously to expedite record and pricing updates.

Processing

- “Builds” components and labor into finished items with the subassembly option, which automatically adds built parts to inventory and removes components from stock.
- “Unbuilds” or “unpacks” assembled parts into components or individual items.
- Allows entry of receipts, issues, returns, and adjustments.
- Allows inventory cost adjustment after receipt of parts.

Reporting

- Provides the information you need to maintain adequate stock levels using the Order Recommendation report.
- Sorts reports by part number, part description, vendor, product line, or bin location.
- Provides numerous inventory reports to analyze inventory performance.

“ . . . With the stock turnaround reports in Sage BusinessWorks, I know exact quantities on hand. I can prevent over- or under-purchasing inventory based on the turnover rate and the average stock on hand.”

Megan Twitchell, Bookkeeper
Rising Sun Enterprises, Inc

